



HOW CAN I USE EMPOWERED AID IN MY WORK?

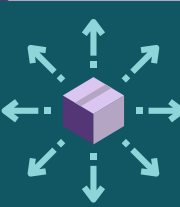
Click on icons to be redirected to our free resources

2



Our participatory contextualization guide will help you adapt the findings of the participatory action research with local communities to produce recommendations for safer distributions that are contextually relevant and effective.

4

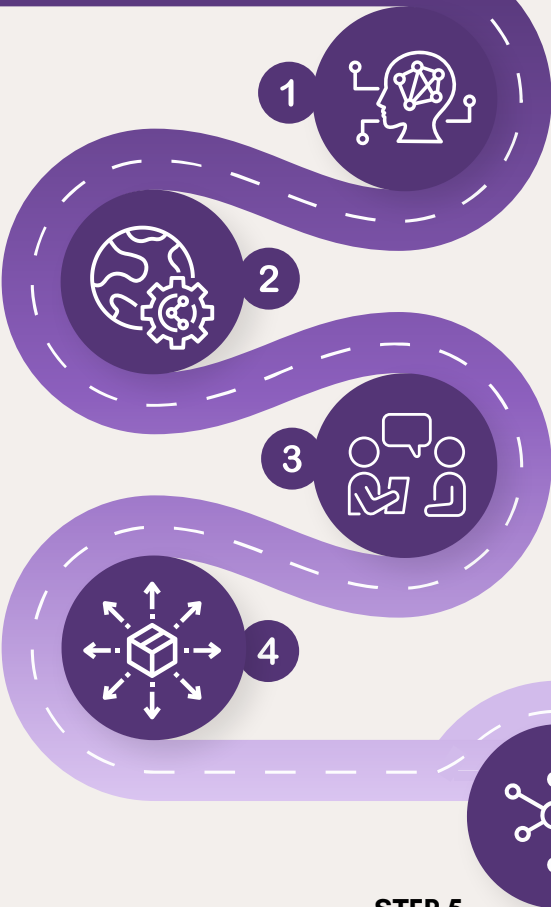


The contextualization guide (step 2) helps you identify & prioritize with the community a list of recommendations to mitigate SEA risk during your distributions.

During and after these distributions, use the adapted M&E tools (step 3) to capture the impact of recommendations in making distributions safer.

STEP 2
Contextualize our findings to your context using our participatory contextualization workshop guide.

STEP 4
Adapt distributions based on findings from the contextualization workshop and monitor them with your newly adapted tools.



STEP 1
Learn how to reduce risks of SEA in distributions by reading our research findings and by enrolling in our online course and live discussions.

STEP 3
Adapt your monitoring and evaluation tools to better capture risks of SEA and the impact of the recommendations you have implemented.

STEP 5
Share the results with our community of practice so that you can become part of the change to make humanitarian aid safer.

1



Our reports from research in different contexts share findings on risks of SEA and provide targeted, action-oriented recommendations to make aid distributions safer.

1



Our sector tip-sheets summarise key findings on SEA in relation to specific types of distributions and provide targeted recommendations to make them safer for women and girls.

1



Our free, self-paced online course (available in English, Arabic, French & Spanish) teaches you how to use participatory methods, how to prevent SEA in distributions & how to improve M&E processes.

3



Our Toolkit for Planning and Monitoring Safer Distributions helps you to adapt your M&E processes and tools to better capture and address risks of SEA.



Are you interested in working with us or do you need technical support? You can learn more about who we are and how to reach out to us [here](#).